



# Living

CONTEMPORARY SURFACES

COMPACT



COLLECTION CATALOGUE

**unicomstarker®**

CONTEMPORARY SURFACES

# Living

COLLECTION



unicomstarker®

LIVING È UN PROGETTO CERAMICO CHE RISCRIVE I CODICI ESTETICI DELL'ABITARE ATTRAVERSO UNA SUPERFICIE AD EFFETTO CEMENTO, COMPATTA ED ELEGANTE, PERFETTA PER UN PROGETTO ARCHITETTONICO CONTEMPORANEO ALL'AVANGUARDIA. IL MOOD INDUSTRIALE LASCIA IL PASSO AD UNA SOLUZIONE SOFISTICATA ALL'INSEGNA DELLO STILE E DEL DESIGN. LA COLLEZIONE PROPONE INFATTI SIA COLORI NEUTRI E FORMALI, CHE TONALITÀ PIÙ AUDACI COME IL SALVIA, LO ZAFFIRO E IL TERRACOTTA, UNA UNICITÀ CHE SOTTOLINEA LA CONTINUA INNOVAZIONE STILISTICA E TECNICA ALLA BASE DELLA FILOSOFIA UNICOMSTARKER.

“LIVING” COLLECTION IS A CERAMIC PROJECT THAT REDEFINES THE AESTHETIC CODES OF LIVING SPACES THROUGH A CEMENT-EFFECT SURFACE. THIS COLLECTION, CHARACTERIZED BY ITS COMPACT AND ELEGANT DESIGN, IS TAILORED TO MEET THE NEEDS OF AN AVANT-GARDE CONTEMPORARY ARCHITECTURAL PROJECT. MOVING AWAY FROM AN INDUSTRIAL MOOD, “LIVING” COLLECTION OFFERS A REFINED AND SOPHISTICATED SOLUTION THAT SEAMLESSLY COMBINES STYLE AND DESIGN. THE COLLECTION SHOWCASES A WIDE RANGE OF COLOURS WITH A SELECTION OF NEUTRAL AND FORMAL HUES, IN ADDITION TO BOLDER SHADES LIKE SAGE,

# Living

COLLECTION



# Living

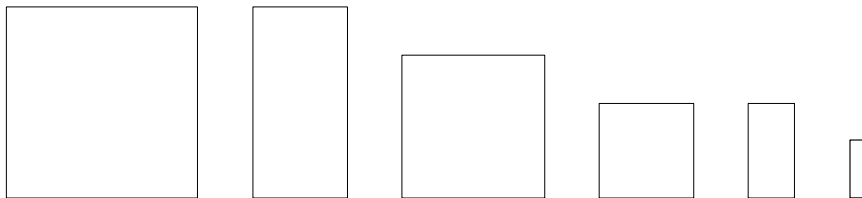
## COLLECTION

**produzione - production**  
industriale - industrial

**spessore - thickness**  
9.5 mm

**usi - use**  
interni residenziali, bagni o locali commerciali e spazi pubblici  
housing environments, bathrooms or refined commercial locations as well as public spaces.

**formati - sizes**  
119,5x119,5 60x119,5 - 80x80 - 60x60 - 30x60 - 7,4x30



**decori - decoration**  
ellisse - mosaico - hexagon

**complementary pieces**  
battiscopa smaltato - gradino - gradone - gradone angolare - elemento a L

CAOLINO

GRAFITE

PIOMBO

SABBIA

SALVIA

TERRACOTTA

ZAFFIRO

6

UNICOMSTARKER  
CONTEMPORARY SURFACES



7

TERRACOTTA



**LIVING TERRACOTTA**  
60x60\_24"x24" / 7,5x30\_3"x12"

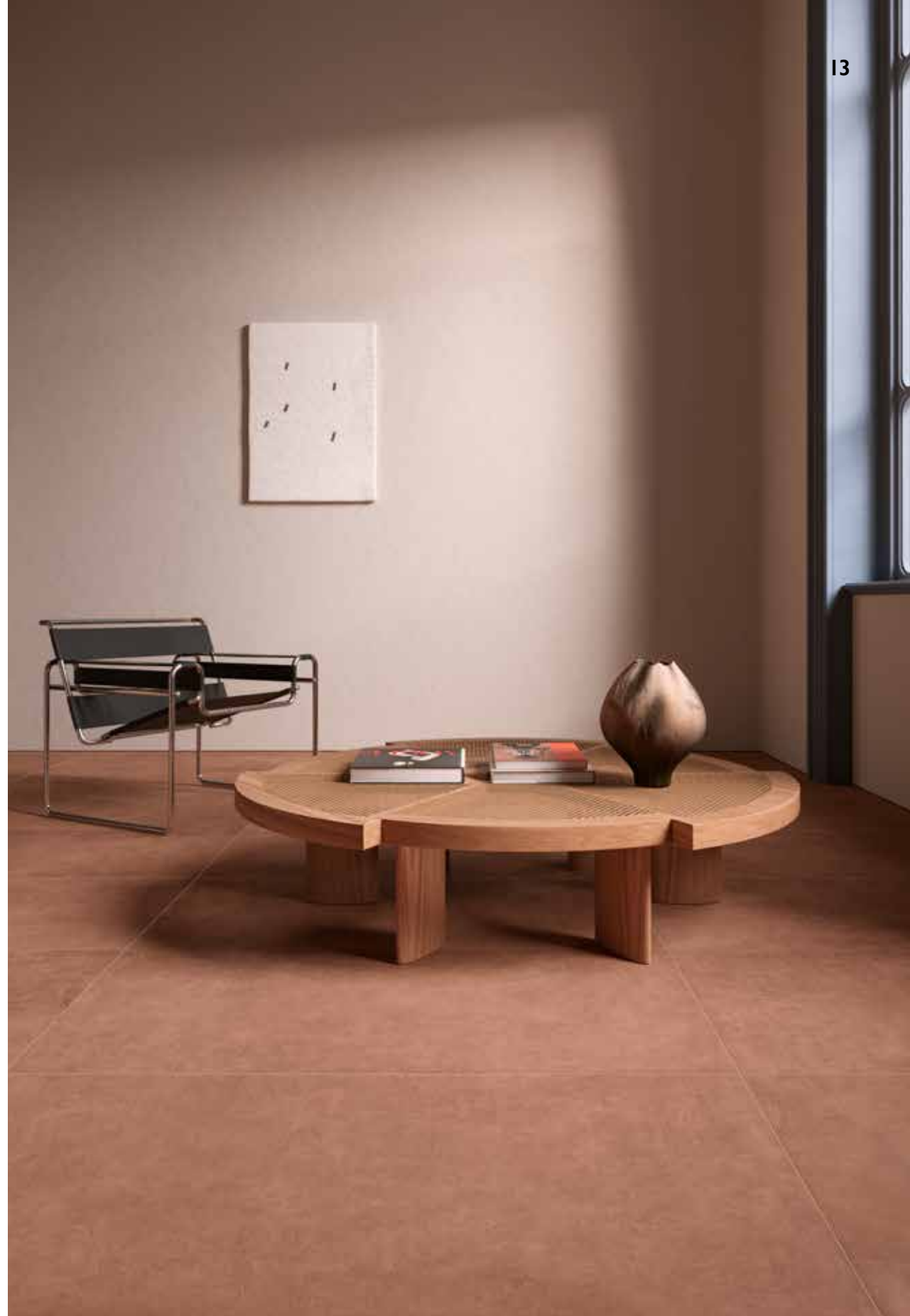




**LIVING TERRACOTTA**  
60x120\_24"x48" / 7,5x30\_3"x12"  
**VENICE SAN MARCO**  
60x60\_24"x24"



**LIVING TERRACOTTA**  
60x120\_24"x48" / esagona 30x34\_12"x13"







SALVIA

**LIVING SALVIA**

7,5x30\_3"x12" / decoro Ellisse 60x60\_24"x24"

**LIVING PIOMBO**

120x120\_48"x48"



**LIVING SALVIA**  
7,5x30\_3"x12"  
**LIVING SABBIA**  
60x120\_24"x48"





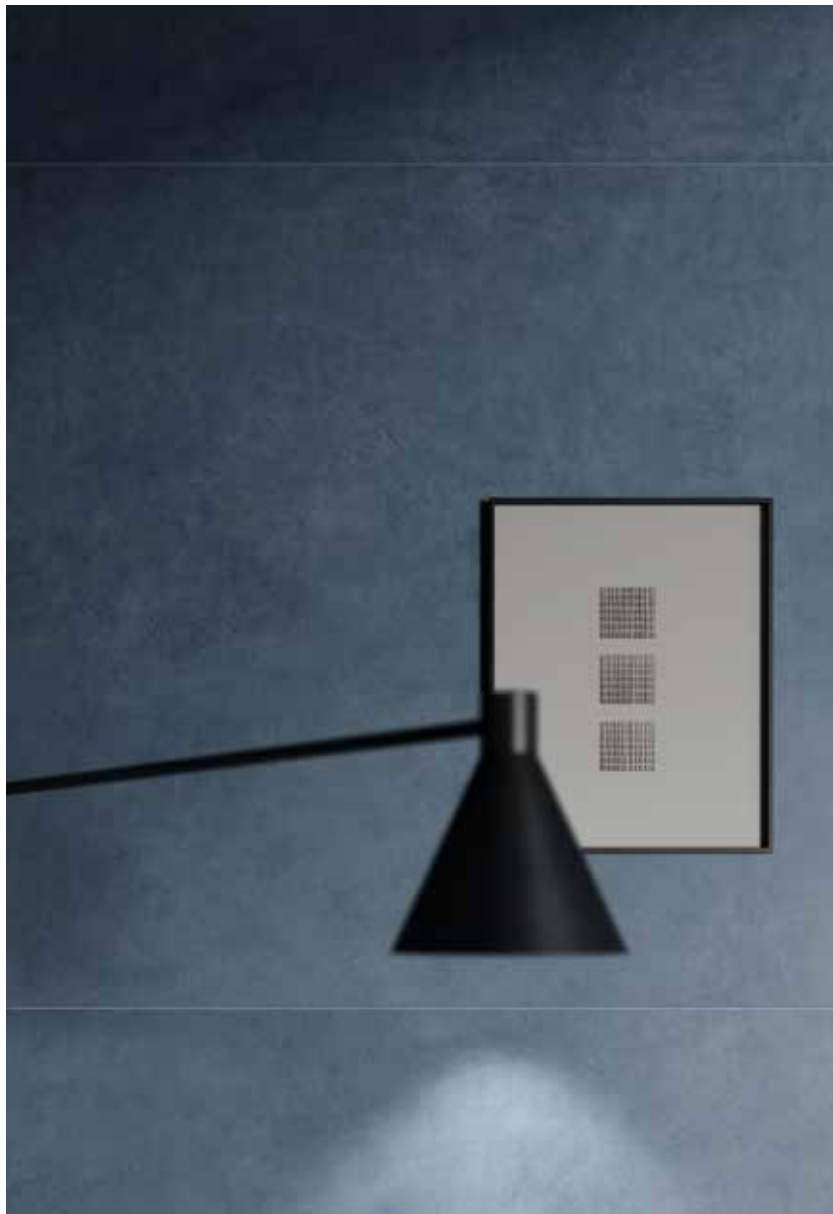
ZAFFIRO

**LIVING ZAFFIRO**

60x60\_24"x24" / decoro Ellisse 60x60\_24"x24" / mosaico 30x30\_12"x12"

**LIVING PIOMBO**

60x120\_24"x48"

**LIVING ZAFFIRO**

120x120\_48"x48"

**LIVING GRAFITE**

60x60\_24"x24"

**LIVING CAOLINO**

60x60\_24"x24" / 30x60\_12"x12"





CAOLINO

**LIVING CAOLINO**

120x120\_48"x48" / esagona 30x34\_12"x13"





**LIVING CAOLINO**  
80x80\_32"x32"





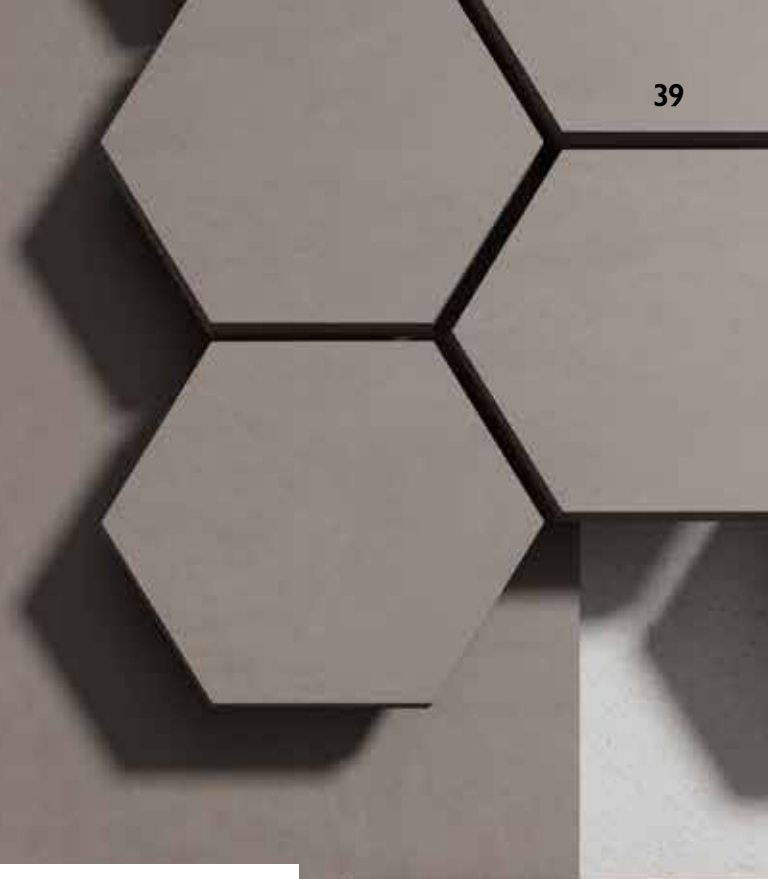
SABBIA



**LIVING SABBIA**  
120x120\_48"x48" / 7,5x30\_3"x12"



LIVING SABBIA  
120x120\_48"x48" / 60x120\_24"x48"



PIOMBO



**LIVING PIOMBO**  
80x80\_32"x32"



**LIVING PIOMBO**

7,5x30\_3"x12"

**LIVING SABBIA**

7,5x30\_3"x12"

**REVERIE DECO 2**

20x20\_8"x8"





GRAFITE



**LIVING GRAFITE**

FLOOR 60x60\_24"x24" / 60x120\_24"x48" GRIP

**LIVING CAOLINO**

WALL 120x120\_48"x48"



**LIVING GRAFITE**  
60x120\_24"x48"  
**LIVING SABBIA**  
7,5x30\_3"x12"

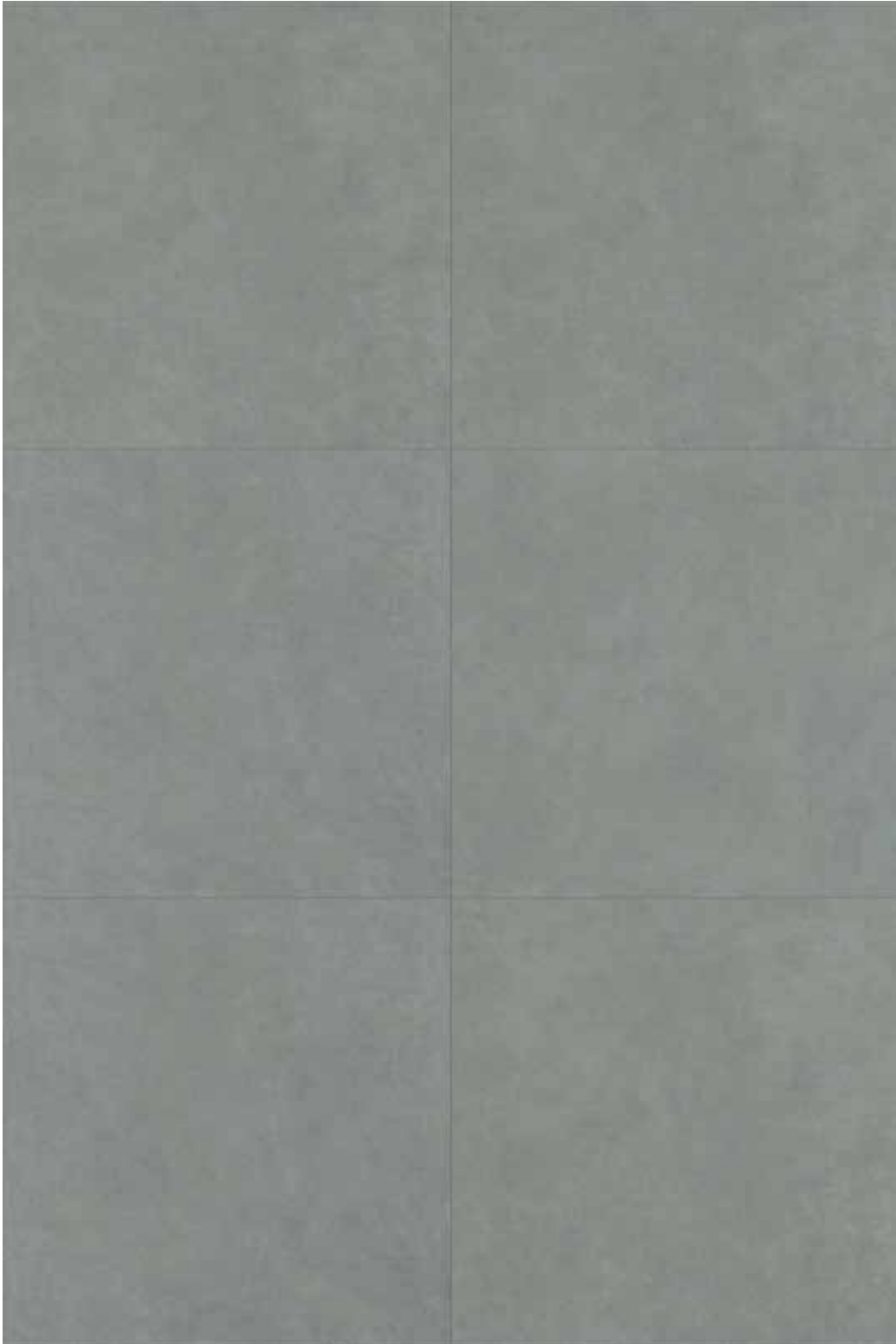


# Living

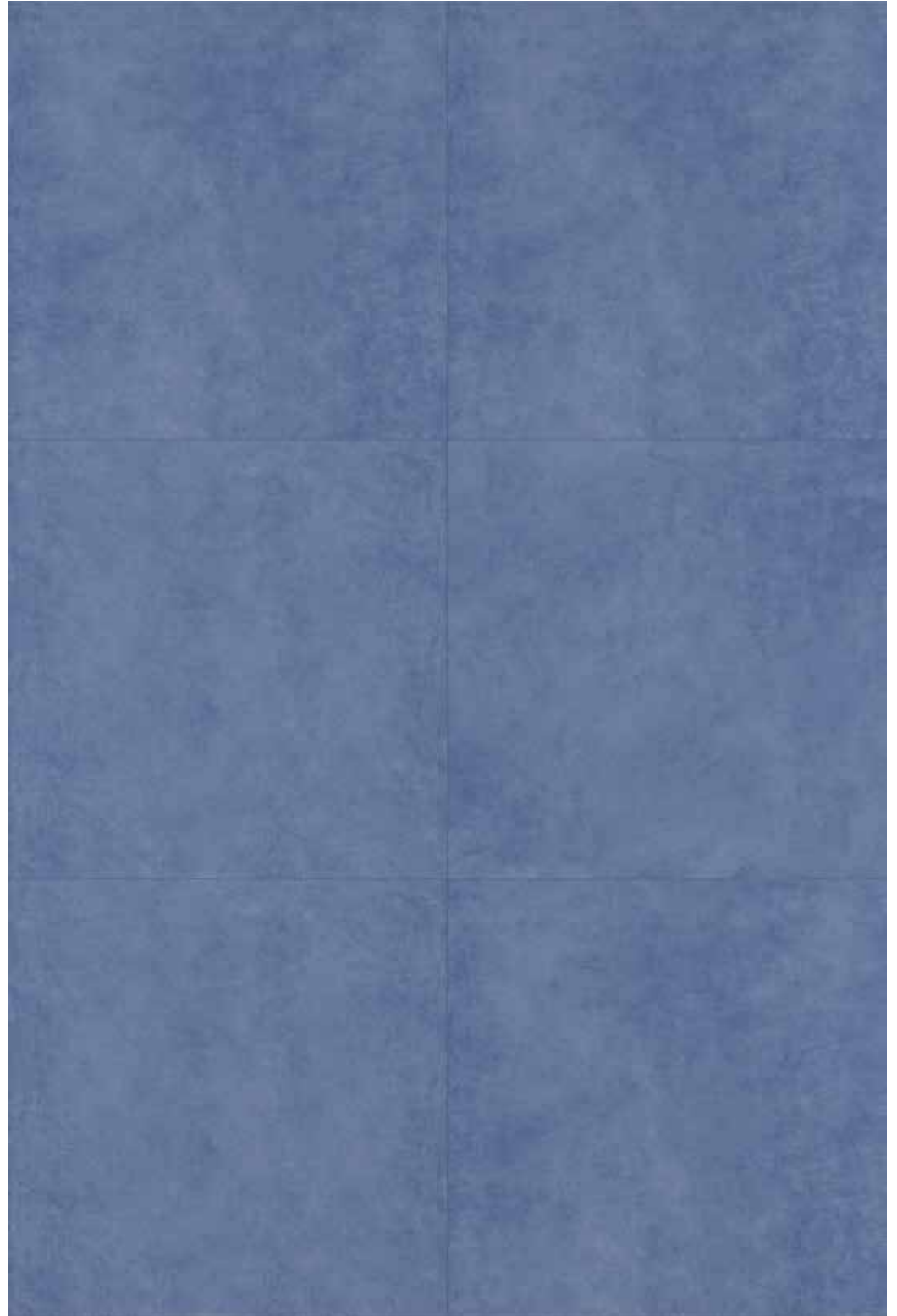
COLLECTION



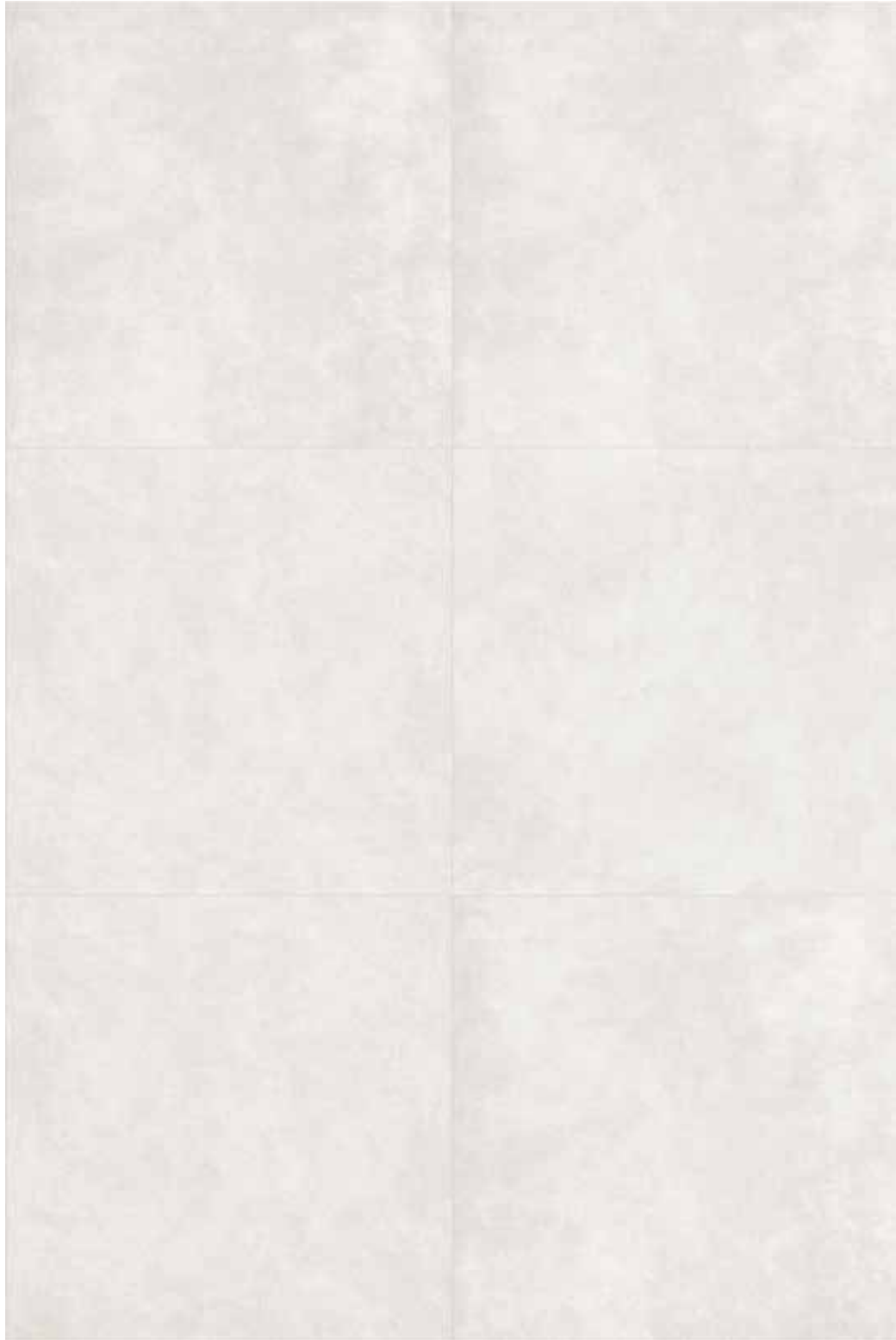
S A L V I A



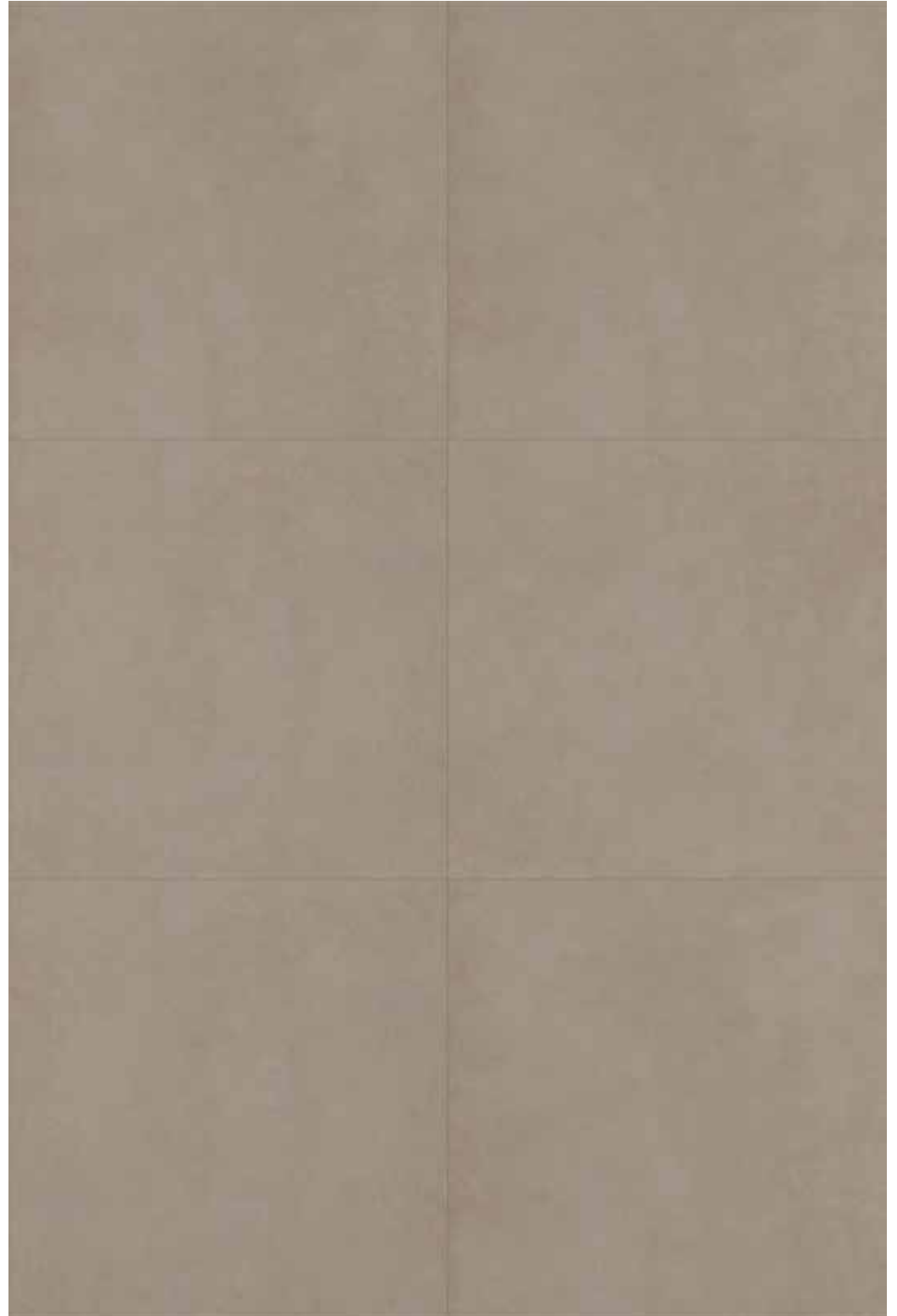
Z A F F I R O



CAO L I N O



S A B B I A



P I O M B O

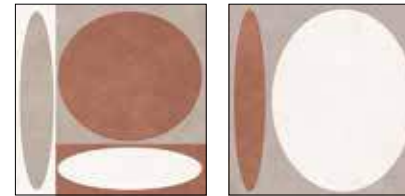


G R A F I T E



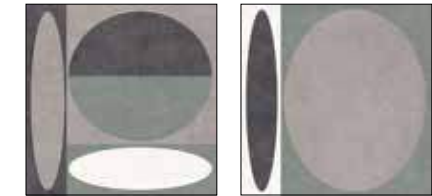
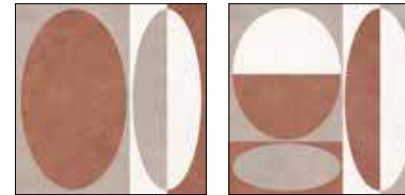
**unicomstarker®**  
DECORS

## DECORI - DECORS



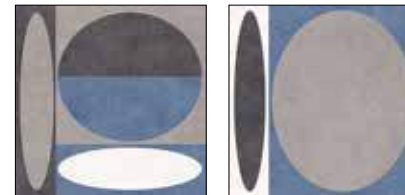
ELLISSE TERRACOTTA

60 x 60  
24" x 24"



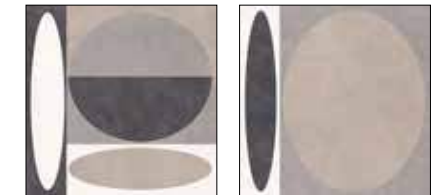
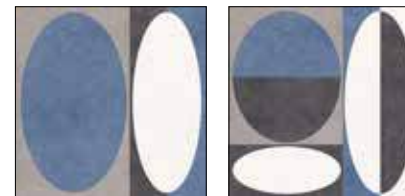
ELLISSE SALVIA

60 x 60  
24" x 24"



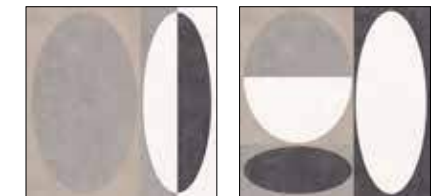
ELLISSE ZAFFIRO

60 x 60  
24" x 24"



ELLISSE SABBIA

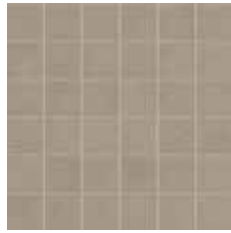
60 x 60  
24" x 24"



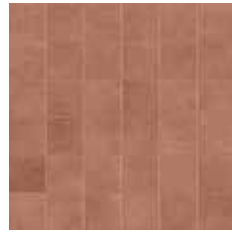
## MOSAICI - MOSAICS

36 tessere  
tessera 5 x 5

MOSAICO CAOLINO

 $\frac{30 \times 30}{12'' \times 12''}$ 36 tessere  
tessera 5 x 5

MOSAICO SABBIA

 $\frac{30 \times 30}{12'' \times 12''}$ 36 tessere  
tessera 5 x 5

MOSAICO TERRACOTTA

 $\frac{30 \times 30}{12'' \times 12''}$ 

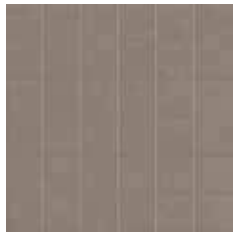
HEXAGON CAOLINO

 $\frac{30 \times 34}{12'' \times 13''}$ 

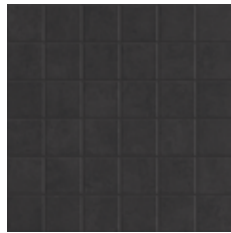
HEXAGON SABBIA

 $\frac{30 \times 34}{12'' \times 13''}$ 

HEXAGON TERRACOTTA

 $\frac{30 \times 34}{12'' \times 13''}$ 36 tessere  
tessera 5 x 5

MOSAICO PIOMBO

 $\frac{30 \times 30}{12'' \times 12''}$ 36 tessere  
tessera 5 x 5

MOSAICO GRAFITE

 $\frac{30 \times 30}{12'' \times 12''}$ 

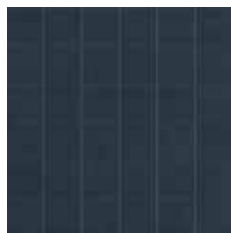
HEXAGON PIOMBO

 $\frac{30 \times 34}{12'' \times 13''}$ 

HEXAGON GRAFITE

 $\frac{30 \times 34}{12'' \times 13''}$ 36 tessere  
tessera 5 x 5

MOSAICO SALVIA

 $\frac{30 \times 30}{12'' \times 12''}$ 36 tessere  
tessera 5 x 5

MOSAICO ZAFFIRO

 $\frac{30 \times 30}{12'' \times 12''}$ 

HEXAGON SALVIA

 $\frac{30 \times 34}{12'' \times 13''}$ 

HEXAGON ZAFFIRO

 $\frac{30 \times 34}{12'' \times 13''}$



## TECHNICAL INFORMATION &amp; PLUS

## FORMATI - SIZES

RETTIFICATO	RETTIFICATO	RETTIFICATO	RETTIFICATO GRIP RETTIFICATO	RETTIFICATO	RETTIFICATO
$\frac{119,5 \times 119,5}{48" \times 48"}$	$\frac{60 \times 119,5}{24" \times 48"}$	$\frac{80 \times 80}{32" \times 32"}$	$\frac{60 \times 60}{24" \times 24"}$	$\frac{30 \times 60}{12" \times 24"}$	$\frac{7,4 \times 30}{3" \times 12"}$
79	66	65	54 55	51	65

## DECORI - DECORS

MOSAICO	HEXAGON	ELLISSE DECORO
$\frac{30 \times 30}{12" \times 12"}$ 115	$\frac{30 \times 34}{12" \times 13"}$ 34	$\frac{60 \times 60}{24" \times 24"}$ 63

## PEZZI SPECIALI - SPECIAL ITEMS

GRADINO RETT.	GRADONE COSTA RETTA RETT.	GRADONE ANGOLARE COSTA RETTA DX-SX RETT.	ELEMENTO A L RETT.	BATTISCOPA SMALTATO RETT.	
$\frac{30 \times 60}{12" \times 24"}$	$\frac{30 \times 60 \times 4}{12" \times 24" \times 1^{23}"}$	$\frac{30 \times 60 \times 4}{12" \times 24" \times 1^{23}"}$	$\frac{30 \times 60 \times 5}{12" \times 24" \times 2"}$	$\frac{7 \times 60}{3" \times 24"}$	$\frac{7 \times 80}{3" \times 36"}$
RETT. GRIP 33 34	RETT. GRIP 115 118	RETT. GRIP 118 120	RETT. GRIP 49 50	RETT. 15	RETT. 24

## TECHNICAL INFORMATION &amp; PLUS

## IMBALLI - PACKING

cm	inch		spessore thickness	pezzi/sc pcs/box	mq/sc sqm/box	kg/sc kgs/box	sc/pl box/pal	mq/pl sqm/pal	kq/pl kgs/pal
119.5x119.5	48"x48"	rettificato	9.5	2	2.86	55.50	22	62.92	1221.00
60x119.5	24"x48"	rettificato	9.5	2	1.43	30.30	30	42.90	909.00
80x80	32"x32"	rettificato	9.5	2	1.28	26.20	50	64.00	1310.00
60x60	24"x24"	rettificato I grip	9.5	3	1.08	22.35	40	43.20	894.00
30x60	12"x24"	rettificato	9.5	6	1.08	22.05	48	51.84	1058.40
7.4x30	3"x12"	rettificato	9.5	40	0.88	19.20	60	52.80	1152.00
60x60	24"x24"	ellisse decoro		3	1.08	22.35	40	43.20	894.00
30x30	12"x12"	mosaico		11	0.99	18.80	36	35.64	676.80
30x34	12"x13"	hexagon		6		12.78			
7x60	3"x24"	battiscopa smaltato rettificato		12		9.96			
7x80	3"x32"	battiscopa smaltato rettificato		8		10.40			
30x60	12"x24"	gradino rettificato I grip		8		31.20			
30x60	12"x24"	gradone costa retta rettificato I grip		4		17.20			
30x60	12"x24"	gradone angolare costa retta I grip		2		4.30			
30x60	12"x24"	elemento a L I grip		4		17.20			

## FUGHE - JOINT - JOINT - FUGE

per materiale **rettificato** prevedere una fuga di almeno 2 mm sul monoformato e necessariamente 3 mm sul multiformato  
 for **rectified** material, we recommend a 2 mm grout at least when using one size only and a 3 mm grout for multisizes laying solution  
 pour le matériel **rectifié** prévoir un minimum de 2mm de joint et 3mm pour la pose multiformat  
 fuer **rettifiziertes** material-monoverlegung wollen sie bitte eine fugen von 2 mm vorsehen – fuer modulerlegung eine fugen von 3 mm

## CARATTERISTICHE TECNICHE - TECHNICAL FEATURES

standards	characteristics or properties	declared values
ISO 10545-3	assorbimento d'acqua water absorption	< 0.5%
ISO 10545-4	resistenza alla flessione (R) breaking strength	35 N/mm <sup>2</sup>
ISO 10545-13	resistenza agli acidi resistance to acid	GLA
ISO 10545-12	resistenza al gelo frost resistance	resiste frost proof
ISO 10545-14	resistenza alle macchie stain resistance	4
ISO 10545-2	planarità surface flatness	± 0.5%
	spessore thickness	9,5 mm
DIN51097 DIN51130 ANSI A 137.1 DCOF BOT 3000 E	coefficiente d'attrito (scivolosità) dynamic coefficient of friction (slipperiness)	A R10 > 0.42
DIN51097 DIN51130	coefficiente d'attrito (scivolosità) dynamic coefficient of friction (slipperiness)	A+B+C R11 > 0.42
	variazioni cromatiche color shade	V2 variazione leggera V2 slight variation
	ortogonalità orthogonality	± 0.6%

UNICOMSTARKER LIVING COLLECTION  
IS A UNICOMSTARKER'S PROJECT

#### CONTACTS

##### UNICOM SRL

via flumendosa 7  
41042 fiorano modenese  
modena italy  
T +39 (0)536 926011  
unicomstarker.com

##### UNICOMSTARKER SHOWROOM

via flumendosa 7  
41042 fiorano modenese  
modena italy  
T +39 (0)536 926011



**Quanto contenuto nel catalogo è indicativo e non esaustivo riguardo a grafiche, decori, colori, imballi e dimensioni.**

The content of this catalogue is only indicative and not exhaustive in respect of graphics, decorations, colours, packaging and sizes

Le contenu de notre catalogue concernant les decors, coloris, graphiques, emballage et dimensions est indicatif.

Was im Katalog enthalten ist, ist ein Hinweis und nicht erschöpfend in Bezug auf Grafiken, Dekorationen, Farben, Verpackung und Abmessungen.



**think  
outside  
the box**

